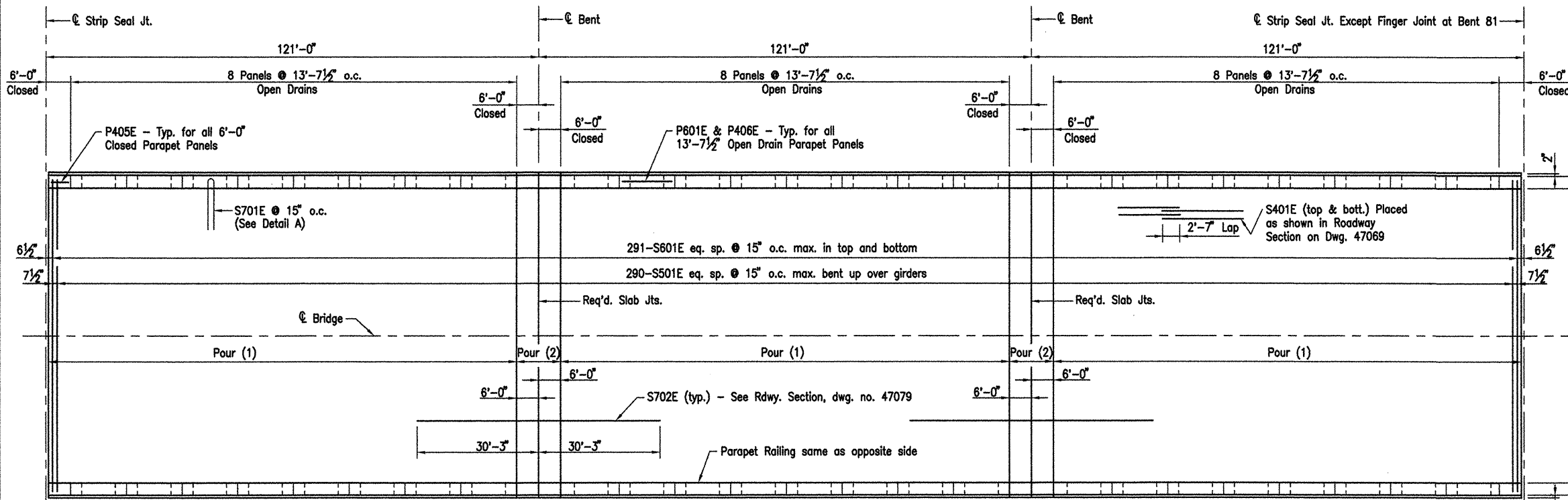


| DATE REVISED | DATE FILMED | DATE REVISED | DATE FILMED | FED. ROAD NO. | STATE | FED. AID PROJ. NO. | SHEET NO. | TOTAL SHEETS |
|--------------|-------------|--------------|-------------|---------------|-----------|--------------------|-----------|--------------|
| 11-1-10 | | | | | ARK. | | 87 | 303 |
| | | | | JOB NO. | 110395 | | | |
| | | | | 06830 | 363' UNIT | | 47081 | |

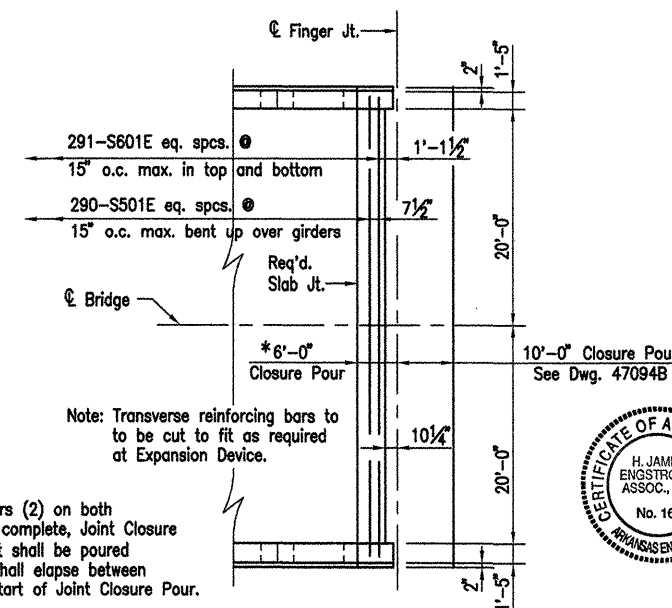


PLAN

Sta. 303+76 to Sta. 311+02 (Two Units Required)

BAR LIST PER 363' UNIT

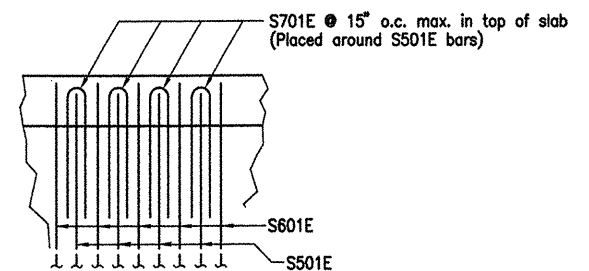
| Mark | No. Req'd. | Length | Dia. Pin | Bending Diagrams (Dimensions are out to out of bars.) |
|-------|------------|-------------|----------|-------------------------------------------------------|
| S401E | 1,017 | 42'-7" | Str. | |
| S501E | 290 | 43'-10 1/2" | 3" | |
| S601E | 582 | 42'-10" | Str. | |
| S701E | 580 | 12'-10" | 6" | |
| S702E | 124 | 60'-6" | Str. | |
| P401E | 660 | 6'-4" | 2" | |
| P402E | 660 | 5'-8" | 2" | |
| P403E | 384 | 5'-11" | 2" | |
| P404E | 384 | 3'-1" | 2" | |
| P405E | 72 | 5'-8" | Str. | |
| P406E | 192 | 13'-4" | Str. | |
| P601E | 240 | 13'-4" | Str. | |
| D401 | 75 | 12'-10" | 2" | |
| D402 | 30 | 10'-3" | 2" | |
| D403 | 60 | 14'-5" | 2" | |
| D404 | 50 | 13'-9" | 2" | |
| D405 | 20 | 11'-9" | 2" | |
| D501 | 250 | 6'-4" | Str. | |
| D502 | 120 | 4'-11" | Str. | |
| D503 | 50 | 5'-0" | Str. | |
| D601 | 48 | 20'-6" | Str. | |

DETAILS FOR END OF UNIT
AT FINGER JOINT-BENT 81

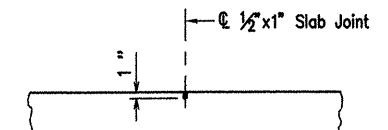
NOTE: Pours with the same number may be placed simultaneously or separately. All Pours (1) must be placed before Pours (2) can be placed. 48 hours shall elapse between the end of a pour and the start of the next pour. 72 hours shall elapse between the end of a pour and the start of an adjacent pour. Any railing pours made before the entire slab unit has been placed must be approved by the Bridge Engineer. Concrete in bridge superstructure shall be consolidated for the entire pour before any concrete has taken its initial set. This may require the use of a retarding agent. The Contractor must obtain approval from the Bridge Engineer for any deviations from the pouring sequence.

Revised Bar List by HJE/MM
GPT- 11-1-10

BRIDGE ENGINEER



DETAIL A



SLAB JOINT DETAIL

Use 1/2" X 1" Type 3, 4 or 6 Joint Sealer. See Subsection 501.02(h) and 501.05(j). Backer rod shall not be installed. Joint Sealer shall be measured and paid for as Class S(AE) Concrete-Bridge. Slab Joints shall extend to the outside edge of the deck slab. Slab joints shall be installed before the parapet railing is poured. If slab joints are to be sawed, they shall be sawed as soon as the concrete has sufficiently set to allow sawing of the joint without damage to the slab. Slab joints shall be placed at all pouring sequence construction joints and required slab joint locations.



ALTERNATE NO. 1

DETAILS OF 363'-0" CONT.
PRESTRESSED CONCRETE GIRDER UNITS
(SHEET 4 OF 7)

WHITE RIVER STR. & APPRS.
(CLARENDON) (PH III) (F)
MONROE COUNTY

ROUTE 79 SEC. 13

ARKANSAS STATE HIGHWAY COMMISSION
LITTLE ROCK, ARK.

Engstrom/Modjeski and Masters, Inc.

DRAWN BY: GPT DATE: Nov. 07 FILENAME: b11039513_s04
CHECKED BY: YO DATE: Nov. 01 SCALE: 1/16" = 1'-0"
DESIGNED BY: GPT DATE: Nov. 01
BRIDGE NO. 06830 DRAWING NO. 47081